

Navigate Power

Electricity and Natural Gas



NavigatePower

COMPANY OVERVIEW

Navigate Power is a leading energy and natural gas consulting firm with offices in Chicago, IL and Columbus, OH. Our mission is to reduce our clients' energy costs, responsibly. Navigate Power's core philosophy is our S³ Approach System: Security, Savings, Service delivering first class service, and maximized savings.

We understand choosing an electricity or natural gas supplier can be confusing and time consuming. We're here for you. Navigate Power is comprised of experienced energy professionals with a track record of helping companies, big and small, reduce and protect their electricity and natural gas budgets.

RETAIL ENERGY SUPPLIERS

American Electric Power (AEP)
Centerpoint Energy Services
Champion Energy Services
DPL Retail Energy
Direct Energy Business
Energy.Me
Hudson Energy
Liberty Power
Noble Americas
Nordic Energy
Vanguard Energy

FAST FACTS

- Typical electricity supply **savings is between 10% and 40%**, depending on your current plan
- Delivery service through **local utility (i.e. AEP, FES, DPL.)**
- There are **no enrollment or hidden Fees**
- Fully licensed through the Public Utilities Commission of Ohio



NavigatePower

100 E. Campus View Boulevard, Suite 250
Columbus, OH 43235
(888) 698-9813
www.navigatepower.com

SAVINGS AND SERVICE, GUARANTEED

Business Solutions

How to Switch

Did you know...

Many customers have the option to choose the company that provides your electricity – not the company that delivers it, but the company that actually generates and supplies your power?

Just like shopping for car insurance or phone service, consumers can shop around to find the supplier, price and product that best fits their electric generation needs.

And the best part... it's easy!



Contact Us

For residential inquiries:

 [Send us a message](#)

 [Live chat](#)

 **1-877-204-9520**

the
**Illuminating
Company**
A FirstEnergy Company

OhioEdison
A FirstEnergy Company

ToledoEdison
A FirstEnergy Company

<https://www.fes.com/content/fes/home/business/how-to-switch.html>



NavigatePower

Switching FAQs

Q. Is switching worth it?

A. Absolutely. Consider this: Cold weather can mean higher electricity usage. And the sooner you enroll, the longer you can take advantage of special pricing.

Q. What happens when I leave the electric utility? Will my power supply be interrupted?

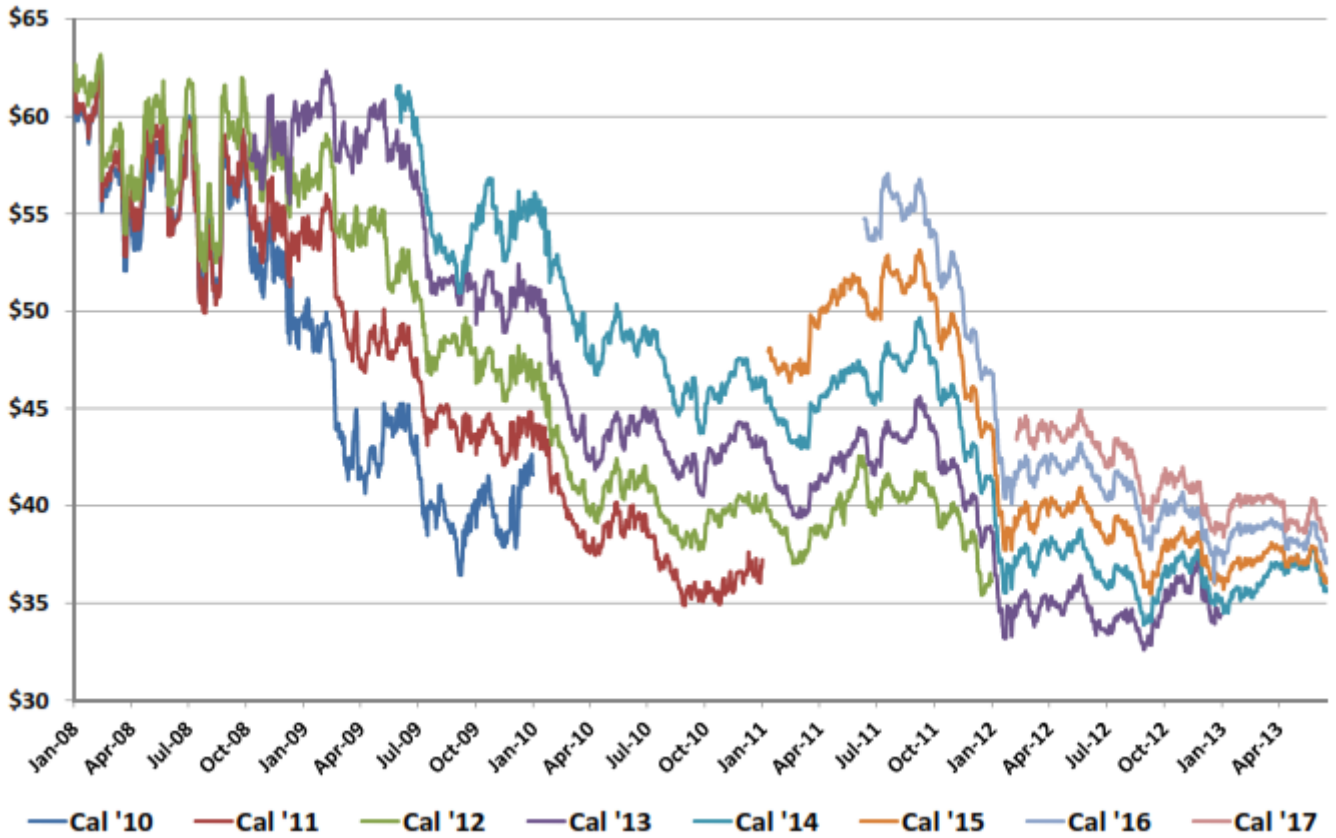
A. No, there will be no interruption to your power supply. The process is seamless, and your reliability and service will not be affected.

Q. What are the benefits of switching energy providers?

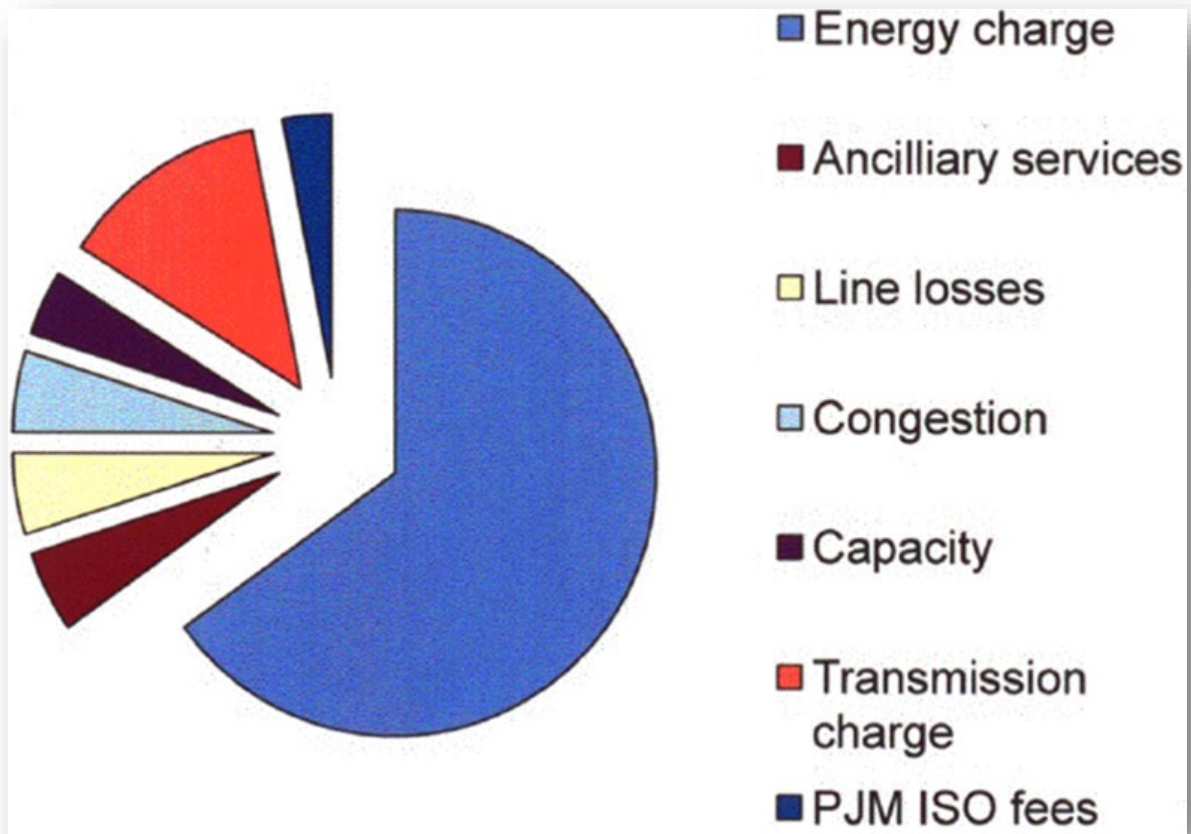
A. Switching generation providers is one of the easiest ways to save money. And enrolling with us is quick and easy – just have a recent electric bill on hand.

ELECTRICITY

PJM FES Historical Pricing: Forward Strip Prices



WHAT'S IN A CHARGE?



There are different plans you can choose from. The most popular plan businesses choose is a 100\$ fixed rate (“full requirements”) energy supply rate. Various suppliers will plans as a fixed rate, but leave some energy supply related charges variable with the market. Ensure you electricity quote includes the all of the above energy supply charges.

